

NAI Platform

For Lease | 30,887± SF
Office Building



1003 New Loudon Road, Latham, NY

MLS # 201800806

Property Features

- Complete building renovation planned, interior and exterior
- Easy access to I-87 and Route 7
- Great synergy with neighboring medical imaging provider
- Private off-street parking shared with Capital Imaging
- Route 9 signage visibility



Tyler Culberson, SIOR
Real Estate Salesperson
Office 518 465 1400 ext. 228
Mobile 518 857 0586
TCulberson@naiplatform.com

14 Corporate Woods Boulevard, Suite 100
Albany, New York 12211
+1 518 465 1400

naiplatform.com

The information contained herein has been given to us by the owner of the property or by other sources we deem reliable; we have no reason to doubt its accuracy, but we do not guarantee it. All information should be verified prior to purchase or lease.

EXISTING

Proposed Facade and Parking Lot Updates



1003 New Loudon Road, Cohoes, NY

MLS # 201800107



Building Information

Building SF:	30,887± SF
First Floor:	Up to 26,000 ± SF
Zoning:	COR
Parcel:	3.01 Acres
Parking:	95 Private Spaces
Stories:	2
Elevators:	1
Sewer:	Municipal
Water:	Municipal
Construction:	Steel / Masonry
Roof:	Rubber Membrane

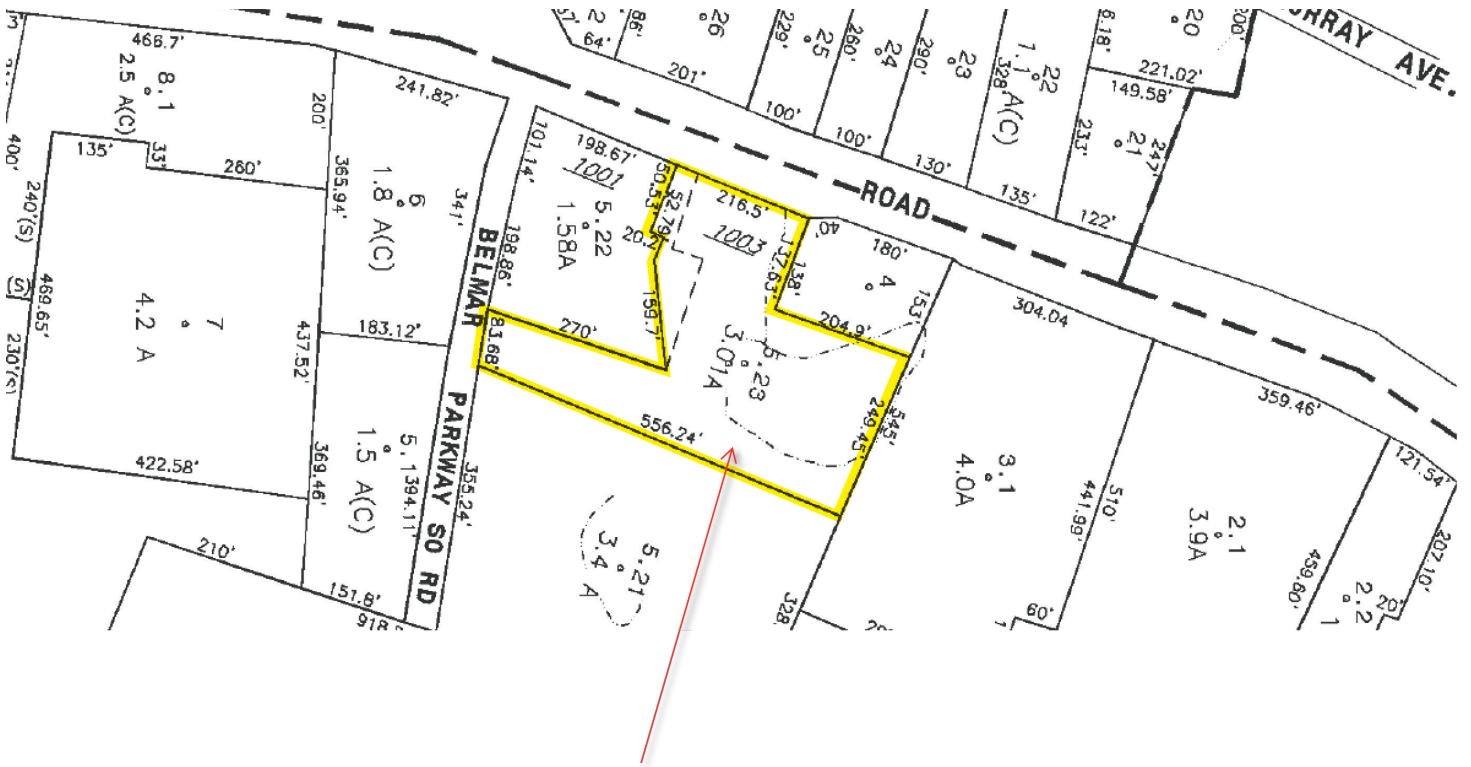
Directions

Northway to exit 7. North on Rte 9 to Belmar Parkway; next to New Country Lexus.



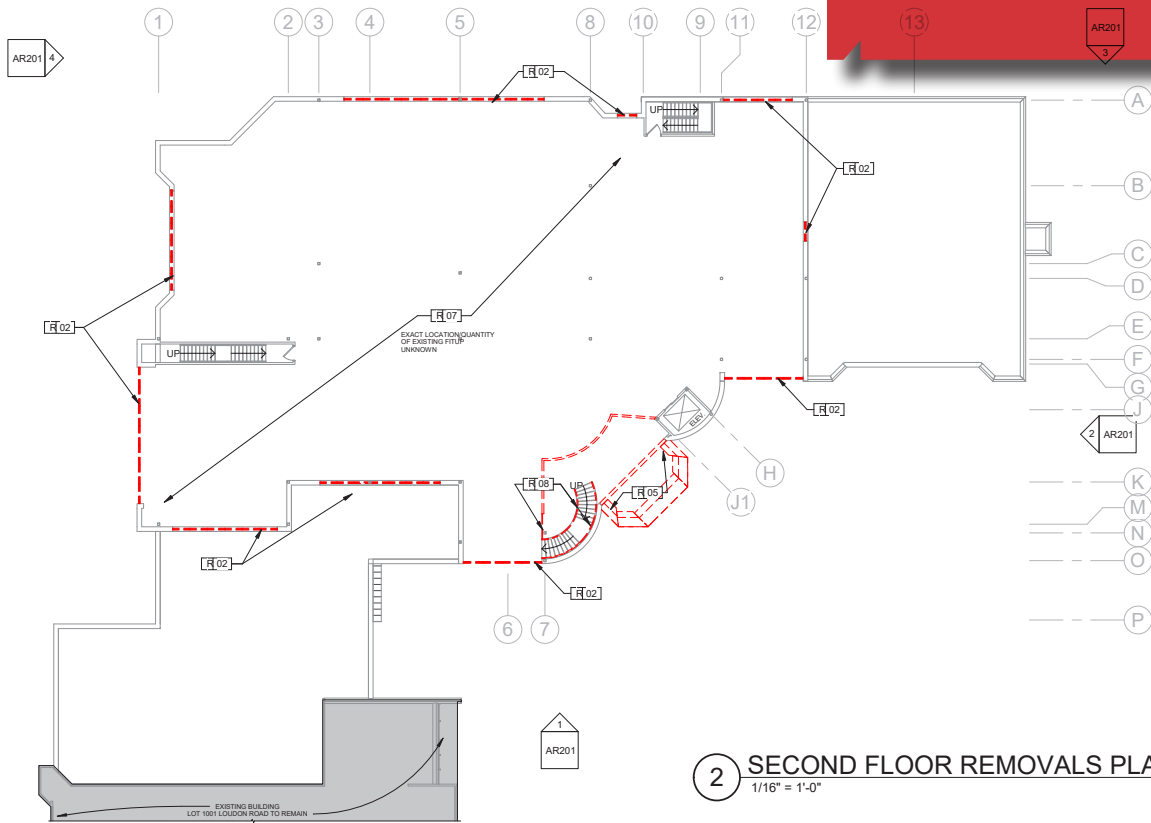
14 Corporate Woods Boulevard, Suite 100
Albany, New York 12211
+1 518 465 1400
naiplatform.com

Site Plan & Tax Map

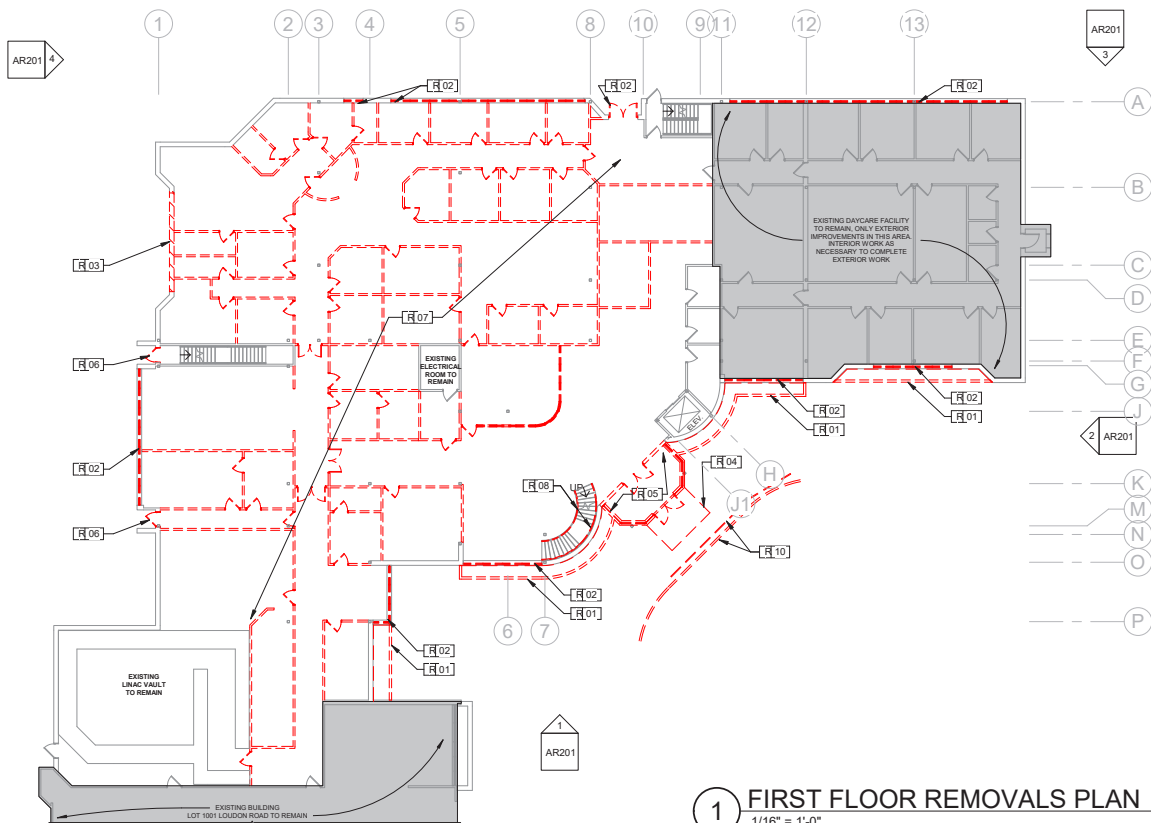


14 Corporate Woods Boulevard, Suite 100
 Albany, New York 12211
 +1 518 465 1400
naiplatform.com

Removals Plan



2 SECOND FLOOR REMOVALS PLAN
1/16" = 1'-0"



1 FIRST FLOOR REMOVALS PLAN
1/16" = 1'-0"